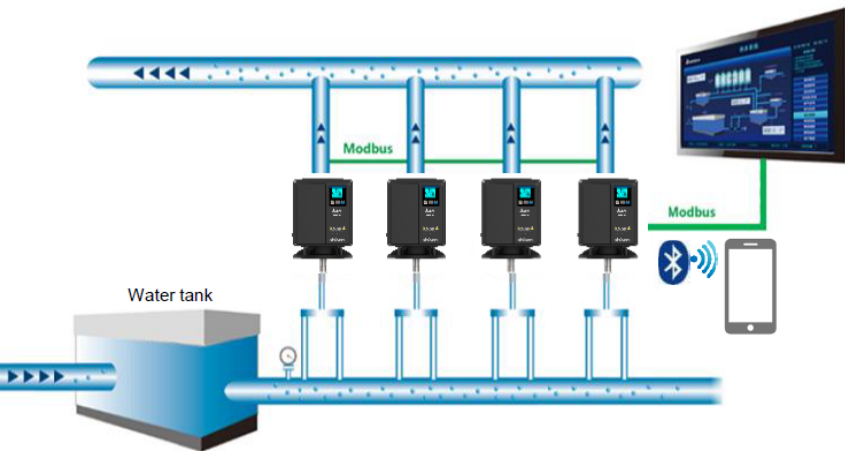




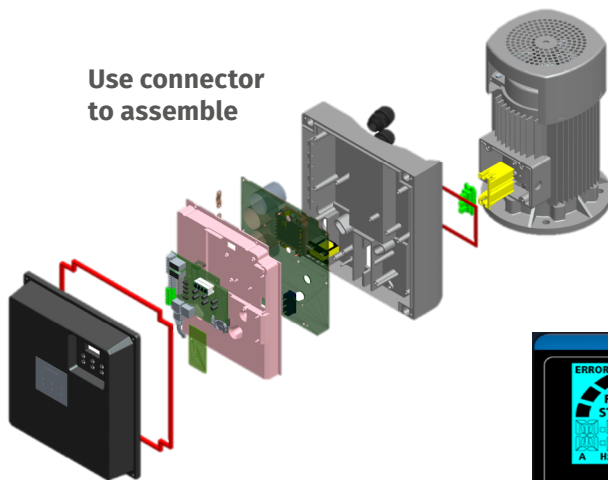
Integrated Pump Solution

0.75 kW – 22 kW



- Motor mounted (IES2 motor)
- Private label possible
- Intelligent Pump Function
 - Multi-pump control
 - Multi-master function
 - Dry Run / Leakage Detection
- SynRM / IM / PM supported
- IP55 enclosure, fan-free design
- Integrated PLC and real time clock
- Built-in EMI filter
- APP (Bluetooth) optionally available for pump application

Use connector to assemble



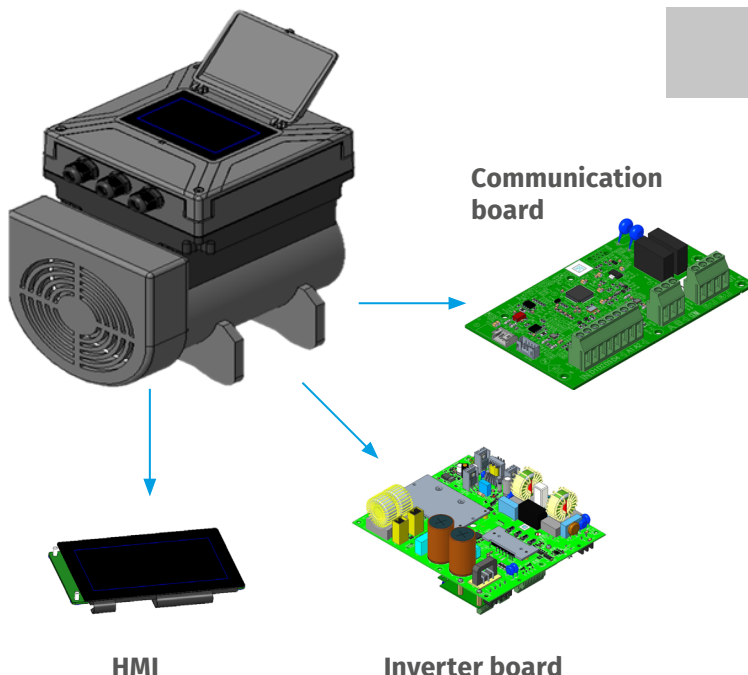
FAST AND EASY INSTALLATION



- Clear keypad for
- Mode & status
 - Pressure value
 - Parameter



CUSTOM DESIGN



- Custom design
- Short development time
- Private label
- Integrated Solution only
- Intelligent Pump Function

1φ 230V, 0.2 ~ 2.2kW

3φ 400V, 0.2 ~ 5kW

Pump Solution Overview

Standard Pump VFD

Performance

C2000+	Adaptability, Connectivity enhancement, High performance on board PLC, full power range/optional card		0.75~630kW 200V-400V-690V series		PM IM	SynRM	150% overload
CP2000	Energy-saving HVAC systems for pump and fan applications. 120% light load capability, On board PLC, full power range/optional card		0.75~630kW 200V-400V-690V series		PM IM	SynRM	120% overload
CFP2000	HVAC, fans & pumps, water treatment, IP55 enclosure, On board PLC, Standard BACnet on board, complete range optional card		0.75~90kW 200V-400V-690V series		PM IM	SynRM	120% overload
ME300	Simple fans & pump applications, small power range		0.1~7.5kW 200V-400V series		PM IM		120% overload

Many possibilities, solution for any application

- Intelligent Pump Control
- Multi-Pump Control Mode
- Constant Pressure Control
- Auto Detection of Water Suspension
- Smart PID for Leakage Detection
- Fire Mode
- Flying Start



DeviceNet™



EtherNet/IP®



www.industrialautomationdelta-emea.com
www.deltaww.com

Sales.IA.DACH@deltaww.com



Built-in STO SIL2 